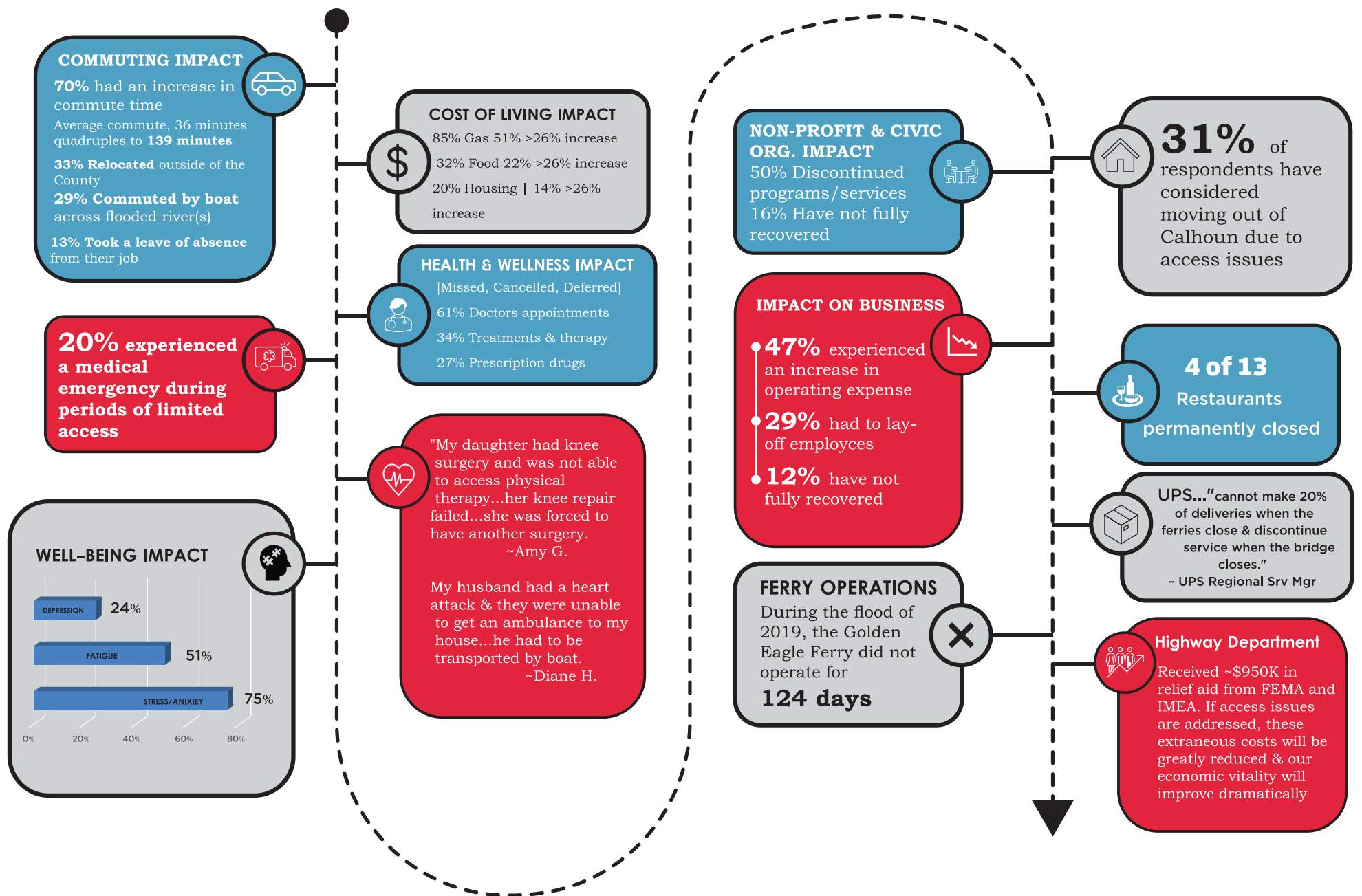


Points of Access Impact Survey 2024

Calhoun County Illinois

Calhoun County Illinois, part of the St. Louis metropolitan area is roughly a 40 mile-long peninsula. It is surrounded by the Mississippi and Illinois Rivers **with primary points of access provided by three (3) ferry services and the Joe Page Bridge**. Flooding and freezing disrupt ferry operations and bridge access, detrimentally impacting commuting to, from, and within the County. **31% of survey respondents indicated they have considered moving out of Calhoun County because of access issues**. To evaluate point of access impact on Calhoun County IL, community members, and businesses participated in a survey with the flood of 2019 being a key point of reference. The following is a summary of the survey results.



Calhoun County desperately needs reliable points of access on the ferry and bridge roadways to enable our residents and businesses to thrive. It is imperative that we address access issues today, to ensure the County's economic future and long-term viability.

This survey was administered by Calhoun Growth Association the Economic Development Committee of Calhoun Community Foundation. Visit our Facebook page to learn more about our programs.
@CalhounIL

CALHOUN GROWTH ASSOCIATION
Progress with Preservation